



Baltimore, MD

80.9 mi² | Pop: 621,849 | 29th Most Populous U.S. City | Est. 1797

Blocks of older, smaller, mixed-age buildings play a critical role in fostering robust local economies, inclusive neighborhoods, and sustainable cities. The Preservation Green Lab report, *Older, Smaller, Better*, leveraged the ideas of **Jane Jacobs** to show why preservation and building reuse matter for successful communities. The *Atlas of ReUrbanism* expands this research to 50 U.S. cities, demonstrating that **Character Counts**.

In **Baltimore**, compared to areas with large, new structures, character-rich **blocks of older, smaller, mixed-age buildings** contain...



More than twice the population density



About twice the number of jobs in small and new businesses



80% more women and minority-owned businesses

The building blocks for an inclusive, diverse, economically vibrant city, Baltimore's older, smaller buildings are irreplaceable assets. For more information about Baltimore's high-character areas, **please see reverse**.

■ **The Atlas of ReUrbanism** | *A Tool for Discovery*

Developed by the **Preservation Green Lab**, the Atlas of ReUrbanism is part of the National Trust for Historic Preservation's **ReUrbanism** initiative. Explore the buildings and blocks of Baltimore and other American cities further by visiting:

www.atlasofreurbanism.com

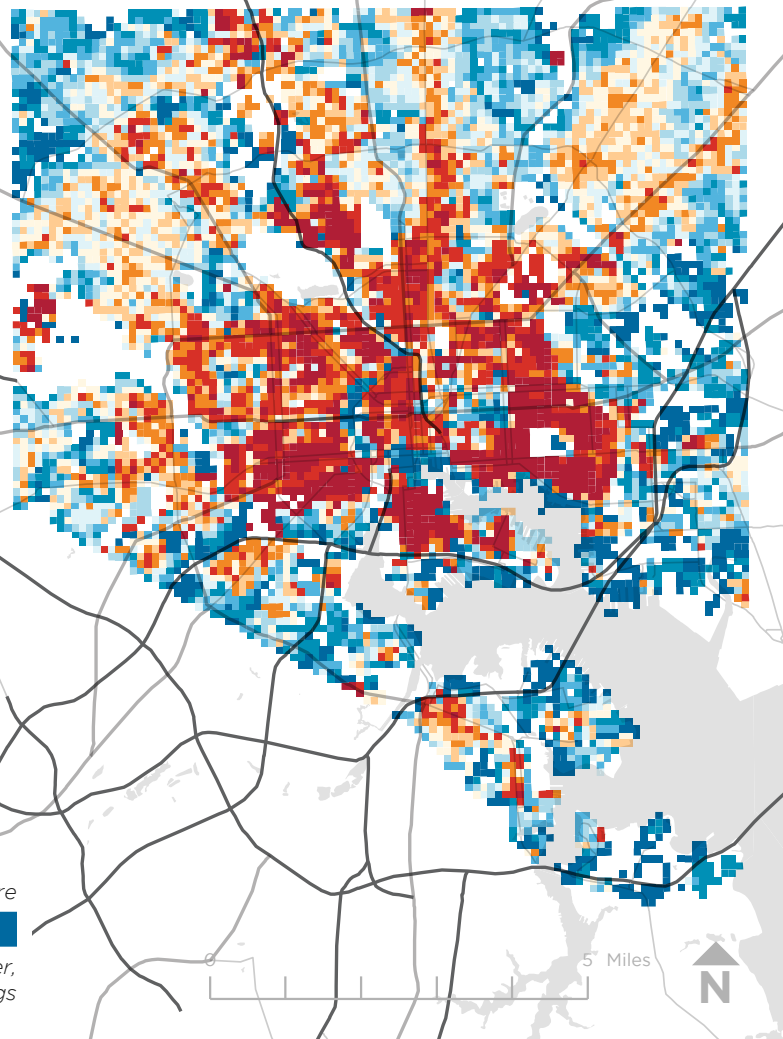


National Trust for Historic Preservation
Preservation Green Lab

Built Character in Baltimore

80.9 mi² | Pop: 621,849 | 29th Most Populous U.S. City | Est. 1797

The Atlas of ReUrbanism uses the Character Score to classify building stock by age and size. Higher scoring areas in **red** represent blocks of older, smaller, mixed-aged buildings. Lower scoring areas in **blue** represent newer, larger, similar-aged development.



High v. Low Character Score

Use the table below to compare high- and low-character score areas in terms of their density and diversity, inclusiveness, and economic vitality.

High Character Score Areas ■ **Low Character Score Areas** ■

Density & Diversity

	■	■
Avg. Population/Grid Square [†]	115.3	54.4
Median Age (Years) [†]	37.3	39.8
Avg. Between Age 18-34 [†]	27.6%	22.8%
Avg. Foreign Born ^{††}	7.2%	8.7%
Avg. New to County ^{††}	5.7%	5.0%
Avg. People of Color [†]	66.5%	66.2%
Avg. Housing Units/Grid Square [†]	57.4	24.3
Avg. Vacant Homes [†]	18.4%	8.9%
Avg. Owned Homes [†]	52.1%	62.0%

Inclusiveness

	■	■
Total Women and Minority-Owned Businesses ^{†††}	2,053	1,130
Avg. Affordable Rental Housing Units [†]	71.9%	75.8%

Economic Vitality

	■	■
Total Jobs in Small Businesses ^{††††}	22,572	10,043
Total Jobs in New Businesses ^{††††}	3,821	1,964
Total Jobs in Creative Industries ^{††††}	16,925	12,702

[†]Data from the 2010 Census
^{††}Data from the 2010-2014 5-Year Estimates of the American Community Survey
^{†††}Data from Dun & Bradstreet, 2016.
^{††††}Data from LEHD LODES, 2014

Building and Preservation Facts

Parcels/Buildings	Baltimore	50-City Average
Total	237,135	204,038
Per Square Mile	2,930	1,436
Median Year Built	1924	1952
On Nat'l Register of Historic Places	34.6%	6.8%
Locally Designated	5.3%	4.3%
Historic Tax Credit Projects	367	27.5

Year Built By Period, Baltimore | 50-City Average

