



Columbus, OH

217.2 mi² | Pop: 850,106 | 15th Most Populous US City | Est. 1812

Blocks of older, smaller, mixed-age buildings play a critical role in fostering robust local economies, inclusive neighborhoods, and sustainable cities. The Preservation Green Lab report, *Older, Smaller, Better*, leveraged the ideas of **Jane Jacobs** to show why preservation and building reuse matter for successful communities. The *Atlas of ReUrbanism* expands this research to 50 U.S. cities, demonstrating that **Character Counts**.

In **Columbus**, compared to areas with large, new structures, character-rich **blocks of older, smaller, mixed-age buildings** contain...



275 federal historic tax credit projects since 2002



43% more jobs in small businesses



More than twice as many women and minority-owned businesses

The building blocks for an inclusive, diverse, economically vibrant city, Columbus's older, smaller buildings are irreplaceable assets. For more information about Columbus's high-character areas, **please see reverse.**

■ **The Atlas of ReUrbanism** | *A Tool for Discovery*

Developed by the **Preservation Green Lab**, the Atlas of ReUrbanism is part of the National Trust for Historic Preservation's **ReUrbanism** initiative. Explore the buildings and blocks of Columbus and other American cities further by visiting:

www.atlasofreurbanism.com

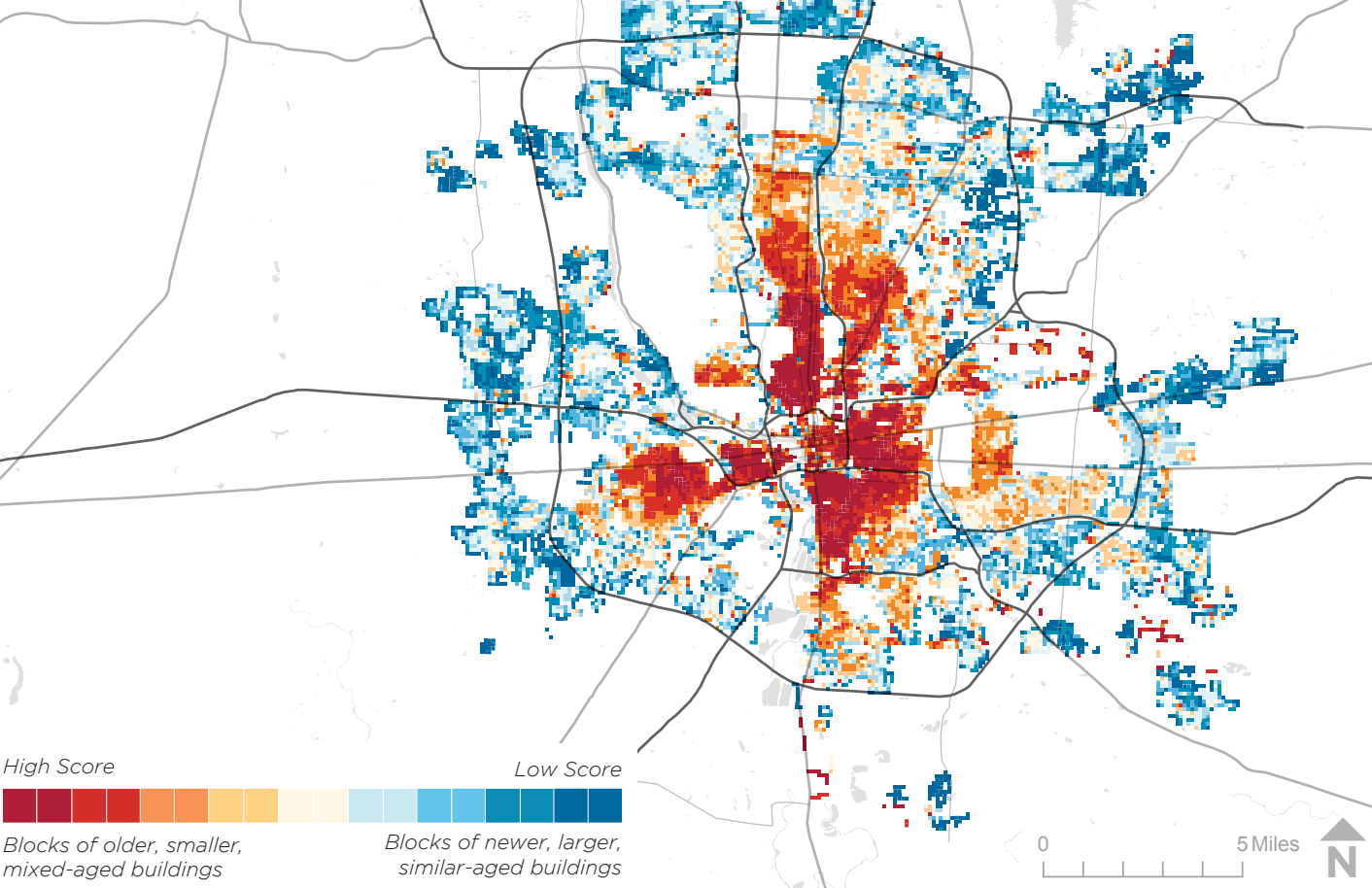


National Trust for Historic Preservation
Preservation Green Lab

Built Character in Columbus

217.2 mi² | Pop: 850,106 | 15th Most Populous US City | Est. 1812

The Atlas of ReUrbanism uses the Character Score to classify building stock by age and size. Higher scoring areas in **red** represent blocks of older, smaller, mixed-aged buildings. Lower scoring areas in **blue** represent newer, larger, similar-aged development.



High v. Low Character Score

Use the table below to compare high- and low-character score areas in terms of their density and diversity, inclusiveness, and economic vitality.

High Character Score Areas (Red) | Low Character Score Areas (Blue)

Density & Diversity

| | High Character Score Areas | Low Character Score Areas |
|---|----------------------------|---------------------------|
| Avg. Population/Grid Square [†] | 47.8 | 33.6 |
| Median Age (Years) [†] | 37.5 | 35.9 |
| Avg. Between Age 18-34 [†] | 26.3% | 28.9% |
| Avg. Foreign Born ^{††} | 8.3% | 11.5% |
| Avg. New to County ^{††} | 5.1% | 5.9% |
| Avg. People of Color [†] | 41.0% | 36.2% |
| Avg. Housing Units/Grid Square [†] | 22.5 | 16.1 |
| Avg. Vacant Homes [†] | 10.8% | 8.2% |
| Avg. Owned Homes [†] | 60.3% | 54.6% |

Inclusiveness

| | High Character Score Areas | Low Character Score Areas |
|--|----------------------------|---------------------------|
| Total Women and Minority-Owned Businesses ^{†††} | 1,544 | 648 |
| Avg. Affordable Rental Housing Units [†] | 90.8% | 87.2% |

Economic Vitality

| | High Character Score Areas | Low Character Score Areas |
|---|----------------------------|---------------------------|
| Total Jobs in Small Businesses ^{††††} | 25,421 | 17,737 |
| Total Jobs in New Businesses ^{††††} | 5,146 | 5,972 |
| Total Jobs in Creative Industries ^{††††} | 21,293 | 17,704 |

[†]Data from the 2010 Census
^{††}Data from the 2010-2014 5-Year Estimates of the American Community Survey
^{†††}Data from Dun & Bradstreet, 2016.
^{††††}Data from LEHD LODES, 2014

Building and Preservation Facts

| Parcels/Buildings | Columbus | 50-City Average |
|--------------------------------------|------------------|-----------------|
| Total | 220,299 | 204,038 |
| Per Square Mile | 1,009 | 1,436 |
| Median Year Built | 1964 | 1952 |
| On Nat'l Register of Historic Places | Data Unavailable | 6.8% |
| Locally Designated | 2.7% | 4.3% |
| Historic Tax Credit Projects | 275 | 27.5 |

Year Built By Period, Columbus | 50-City Average

