

# NPS DEFERRED MAINTENANCE

## By the Numbers



41,044  
ASSETS

Deferred maintenance is defined as a repair need that has not been addressed for a year or more. There are over 40,000 assets in need of repair. They include crumbling roads, rotting historic buildings, eroding trails, outdated visitor amenities, and deteriorating memorials.

## Deferred Maintenance by Asset Type

### Military Fortifications

\$472.5M (3.9%)

### Trails

\$530.6M (4.4%)

### All Other

\$625.7M (5.2%)

### Maintained Landscapes

\$649.2M (5.4%)

### Water Systems

\$695.0M (5.8%)

### Marina & Waterfront Systems

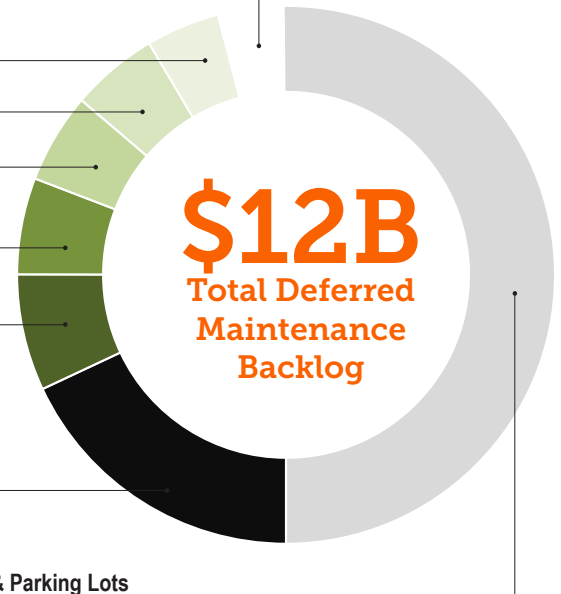
\$841.3M (7.0%)

### Buildings

\$2,159.9M (18.0%)

### Paved Roads, Bridges, Tunnels, & Parking Lots

\$6,011.7M (50.0%)



**\$12B**  
Total Deferred  
Maintenance  
Backlog

**\$6.0B**

## Transportation Projects

Over 10,000 miles of roads provide critical access to national parks for millions of visitors every year. NPS transportation assets include paved roads, bridges, tunnels, and parking lots, as well as major commuter thoroughfares, such as the George Washington Memorial Parkway. Collectively, these transportation assets account for roughly half (**\$6B**) of the NPS maintenance backlog.

**\$6.0B**

## Non-Transportation Projects

Non-transportation maintenance needs include eroding trails, unsafe water and electrical systems, waterfronts, and thousands of buildings in disrepair - including visitor facilities, historic buildings, employee housing, and military structures. Collectively, non-transportation assets account for roughly half (**\$6B**) of the NPS maintenance backlog.

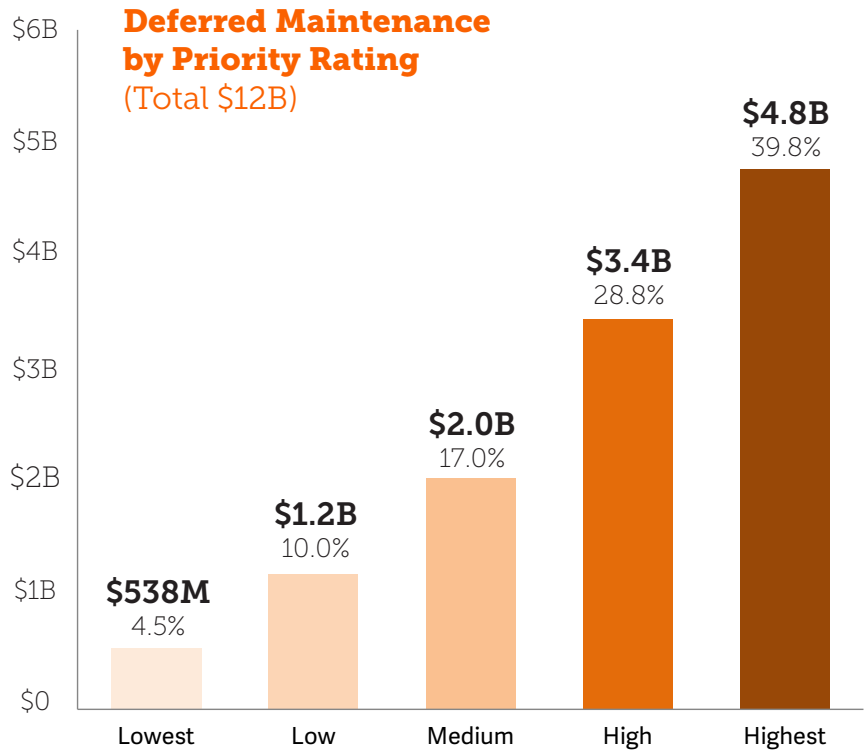
**47%**

## Historic Assets

NPS is responsible for the preservation of some of our nation's most historically significant places. These assets include thousands of archeological sites, nearly 27,000 historic and pre-historic structures, and more than 167 million museum items that document our country's heritage. Historic assets account for **47%** of the NPS maintenance backlog.

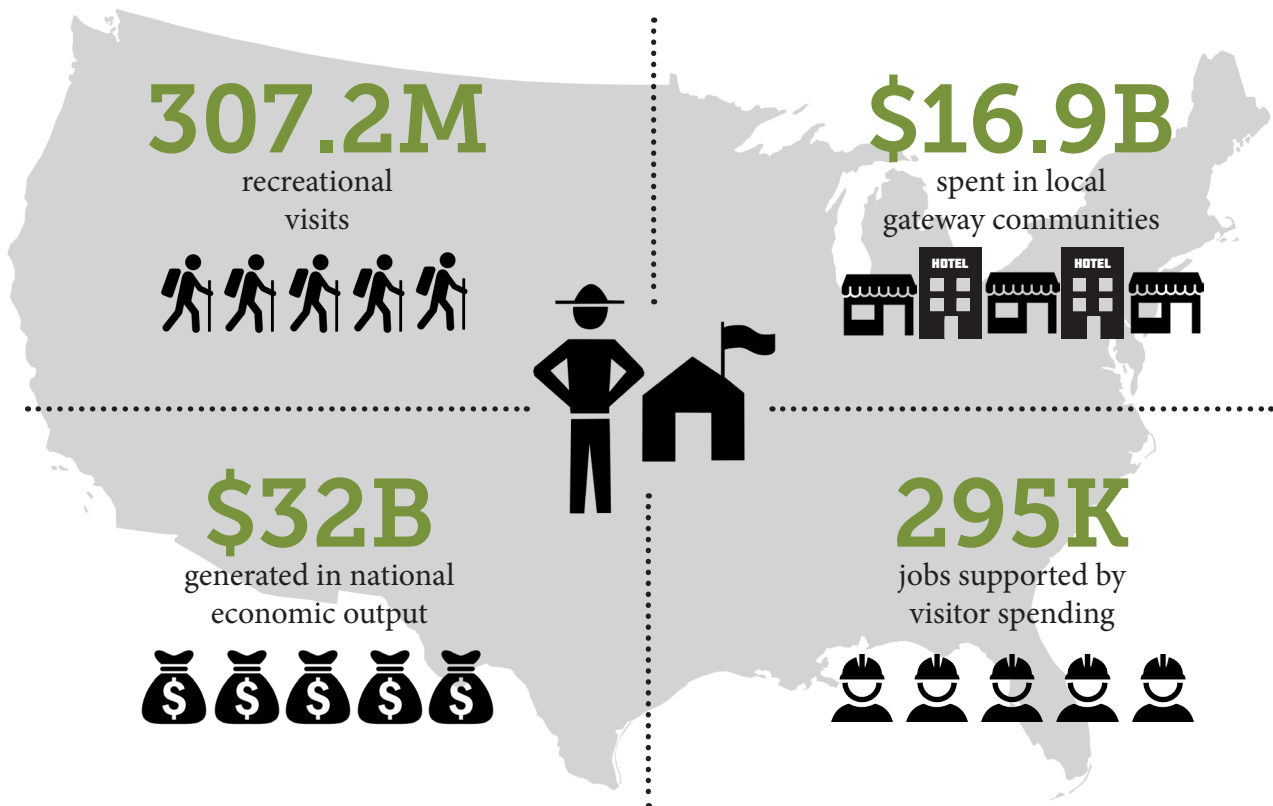
## NPS Priorities

The NPS is mandated by Congress to preserve historic and natural objects for future generations. With tens of thousands of objects to maintain, the agency has developed a rating system to help direct limited funding to high priority maintenance projects. Based on 2015 NPS data, the estimated cost of overdue repairs to highest priority assets—those assets that are critical to the overall mission of the agency—is **\$4.8 billion** (\$2.4 billion in transportation needs and \$2.4 billion in non-transportation needs). Examples of high priority assets include historic buildings, memorials, military fortifications, visitor centers, and key infrastructure systems.



Source: FY15 National Park Service data

## Park Economics



Source: 2015 National Park Visitor Spending Effects: Economic Contributions to Local Communities, States, and the Nation. Natural Resource Report NPS/NRSS/EQD/NRR-2016/1200

Contact: Marcia Argust, Director  
Restore America's Parks  
Email: [margust@pewtrusts.org](mailto:margust@pewtrusts.org)  
Website: [pewtrusts.org/NationalParks](http://pewtrusts.org/NationalParks)

Contact: Geoffrey Brown, Director  
Government Relations  
Email: [gbrown@pewtrusts.org](mailto:gbrown@pewtrusts.org)  
Website: [pewtrusts.org/NationalParks](http://pewtrusts.org/NationalParks)

The Pew Charitable Trusts is driven by the power of knowledge to solve today's most challenging problems. Pew applies a rigorous, analytical approach to improve public policy, inform the public, and invigorate civic life.