



Washington, D.C.

61.1 mi² | Pop: 672,228 | 22nd Most Populous U.S. City | Est. 1801

Blocks of older, smaller, mixed-age buildings play a critical role in fostering robust local economies, inclusive neighborhoods, and sustainable cities. The Preservation Green Lab report, *Older, Smaller, Better*, leveraged the ideas of **Jane Jacobs** to show why preservation and building reuse matter for successful communities. The *Atlas of ReUrbanism* expands this research to 50 U.S. cities, demonstrating that **Character Counts**.

In **Washington**, compared to areas with large, new structures, character-rich **blocks of older, smaller, mixed-age buildings** contain...



Nearly 80% greater population density



93% more jobs in small businesses and 27% more jobs in new businesses



More than half of a billion dollars in private investment through the federal historic tax credit

The building blocks for an inclusive, diverse, economically vibrant city, Washington's older, smaller buildings are irreplaceable assets. For more information about Washington's high-character areas, **please see reverse**.

■ **The Atlas of ReUrbanism** | *A Tool for Discovery*

Developed by the **Preservation Green Lab**, the Atlas of ReUrbanism is part of the National Trust for Historic Preservation's **ReUrbanism** initiative. Explore the buildings and blocks of Washington and other American cities further by visiting:

www.atlasofreurbanism.com

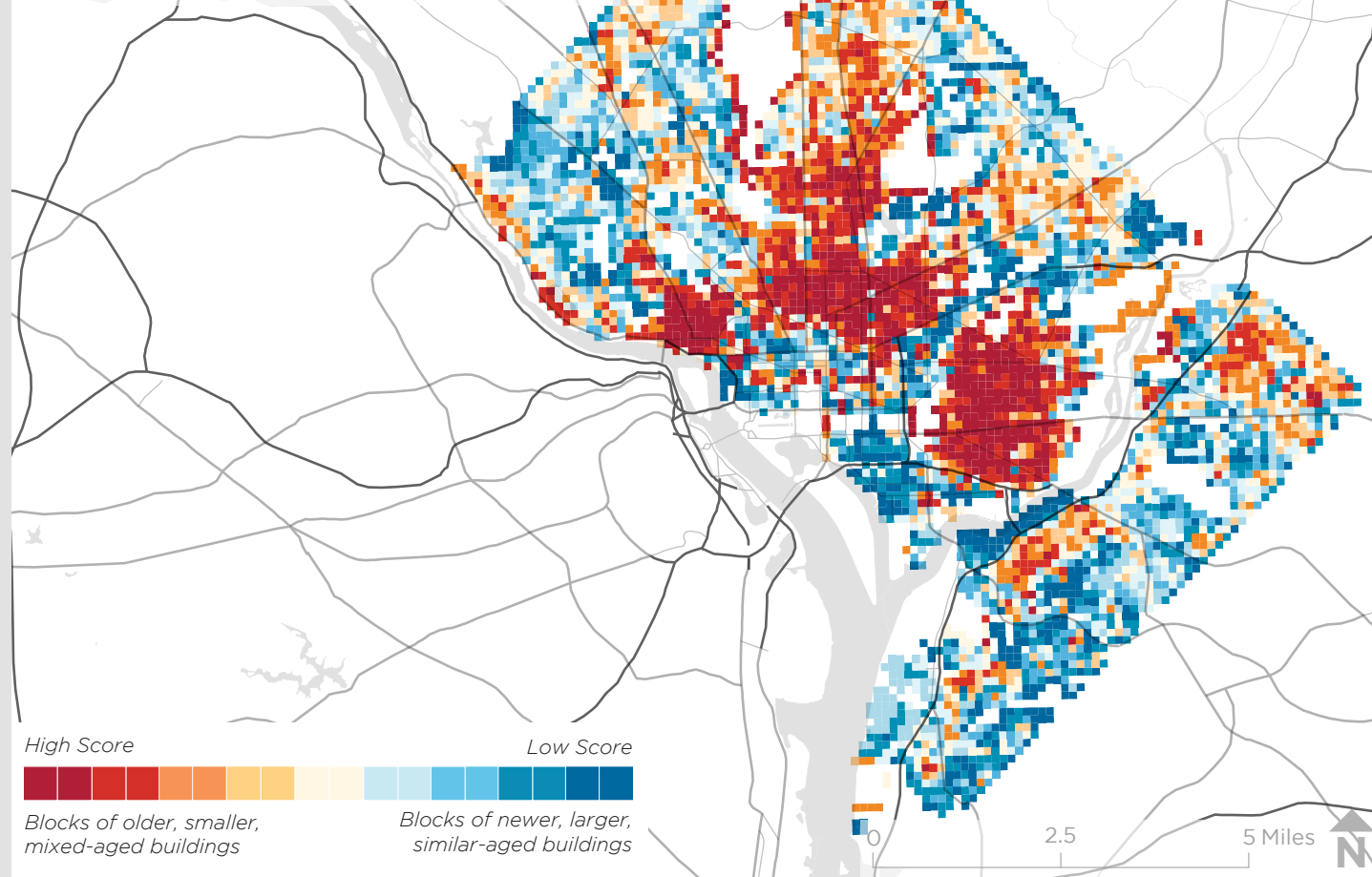


National Trust for Historic Preservation
Preservation Green Lab

Built Character in Washington, D.C.

61.1 mi² | Pop: 672,228 | 22nd Most Populous U.S. City | Est. 1801

The Atlas of ReUrbanism uses the Character Score to classify building stock by age and size. Higher scoring areas in **red** represent blocks of older, smaller, mixed-aged buildings. Lower scoring areas in **blue** represent newer, larger, similar-aged development.



High v. Low Character Score

Use the table below to compare high- and low-character score areas in terms of their density and diversity, inclusiveness, and economic vitality.

High Character Score Areas

Low Character Score Areas



Density & Diversity

	High Character Score Areas	Low Character Score Areas
Avg. Population/Grid Square [†]	142.1	79.6
Median Age (Years) [†]	38.3	40.6
Avg. Between Age 18-34 [†]	30.4%	25.0%
Avg. Foreign Born ^{††}	13.5%	11.3%
Avg. New to County ^{††}	7.4%	7.7%
Avg. People of Color [†]	63.1%	67.2%
Avg. Housing Units/Grid Square [†]	70.8	39.5
Avg. Vacant Homes [†]	9.4%	8.9%
Avg. Owned Homes [†]	56.3%	52.4%



Inclusiveness

	High Character Score Areas	Low Character Score Areas
Total Women and Minority-Owned Businesses ^{†††}	3,800	3,319
Avg. Affordable Rental Housing Units [†]	62.3%	67.9%



Economic Vitality

	High Character Score Areas	Low Character Score Areas
Total Jobs in Small Businesses ^{††††}	32,478	25,625
Total Jobs in New Businesses ^{††††}	8,438	4,378
Total Jobs in Creative Industries ^{††††}	54,266	82,428

[†]Data from the 2010 Census

^{††}Data from the 2010-2014 5-Year Estimates of the American Community Survey

^{†††}Data from Dun & Bradstreet, 2016.

^{††††}Data from LEHD LODES, 2014

Building and Preservation Facts

Parcels/Buildings	Washington	50-City Average
Total	134,309	204,038
Per Square Mile	2,197	1,436
Median Year Built	1930	1952
On Nat'l Register of Historic Places	18.7%	6.8%
Locally Designated	19.4%	4.3%
Historic Tax Credit Projects	47	27.5

Year Built By Period, Washington | 50-City Average

